

- **Contactless** and **non destructive**
- **In-line measurement** during part fast movement
- Multiple measuring head technology possible for **multiple points measuring at the same time**
- High repetition rate for continuous following of the thickness
- Available for all kinds of coatings (solvent and water base...)
- Automated storage and archiving of referenced measurement data

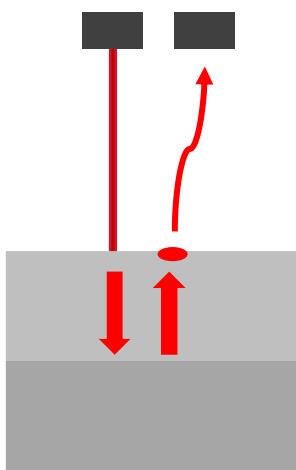


### WAY OF USE

After coating or adhesive deposition steps, each measuring head is placed in front of the important points to measure, perpendicularly to the linear movement of the line.



### INNOVATIVE LASER MEASUREMENT TECHNOLOGY



### ADVANTAGES AND SAVINGS

- In-line measurement allows an immediate correction of the deposition process and better quality and consumption management
- Nondestructive and fast measurement allows to improve precision, gain time and increase the number of data

Measurement repeatability	<0,5µm
Maximum number of measuring heads per command box	10
Dimensions of a measuring head	175 x L32 x h41 mm
Repetition time	0,5s
Maximum line speed	200 m/min